

GRADE R MATHEMATICS AND LANGUAGE IMPROVEMENT PROGRAMME

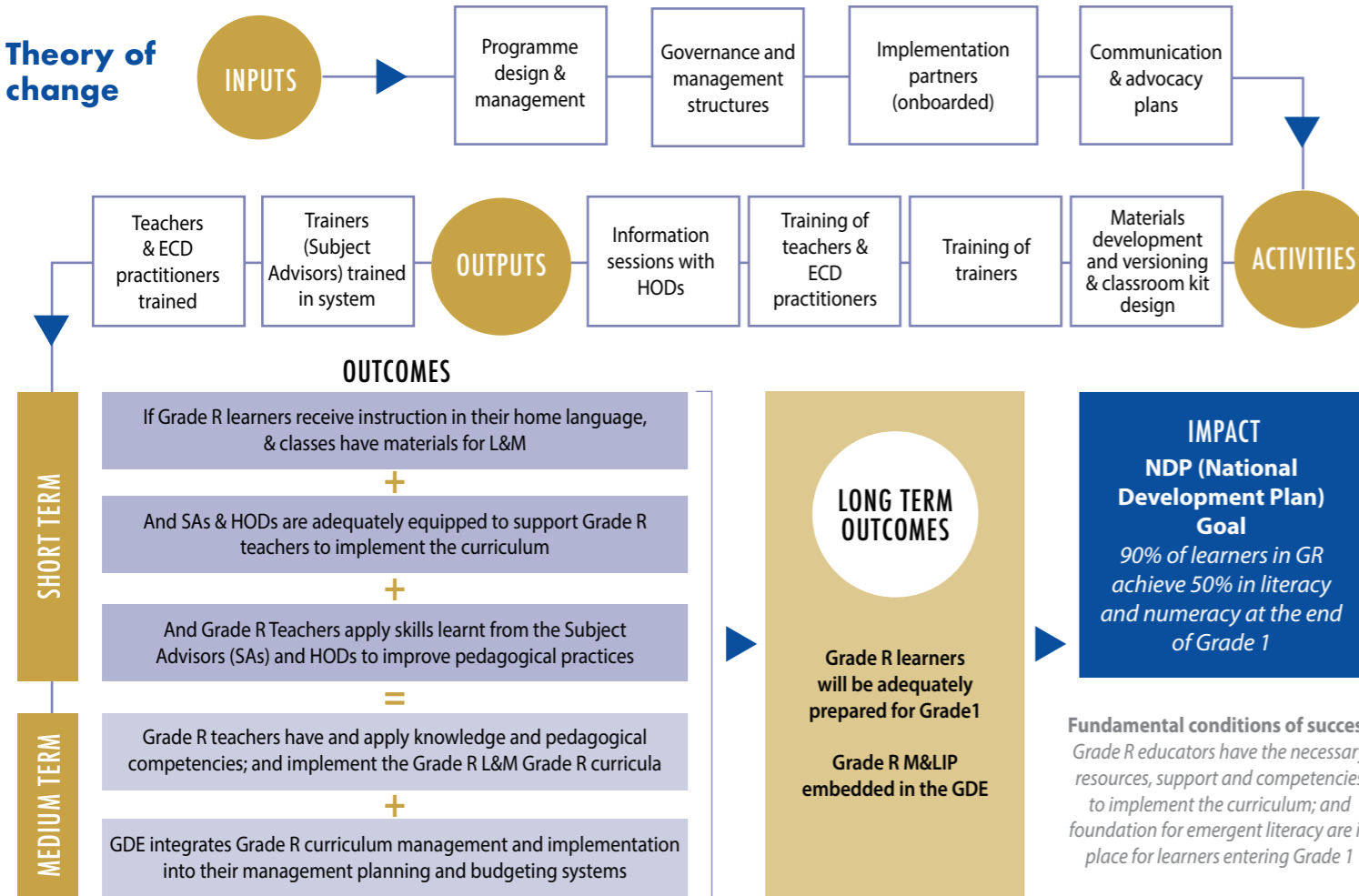
Objectives

- Improve quality of teaching and learning Mathematics and Home Languages
- Gauteng Department of Education Strategic Goal #1 is Early Childhood Development
 - Seamless transitioning from Grade R (GR) to Grade 1 and the entire Foundation Phase
 - 90% of learners achieving 50% proficiency in literacy and numeracy at the end of Grade 1 in line with the goals of the National Development Plan

Purpose

- Grade R & FP (Foundation Phase) Subject Advisors - implement curriculum and improve pedagogical practices
- Grade R Heads of Department & School Management Teams - improve monitoring and support for Grade R teachers/practitioners
- Grade R Teachers & Practitioners - improve competency in curriculum
- Materials - distribute resources for languages and mathematics

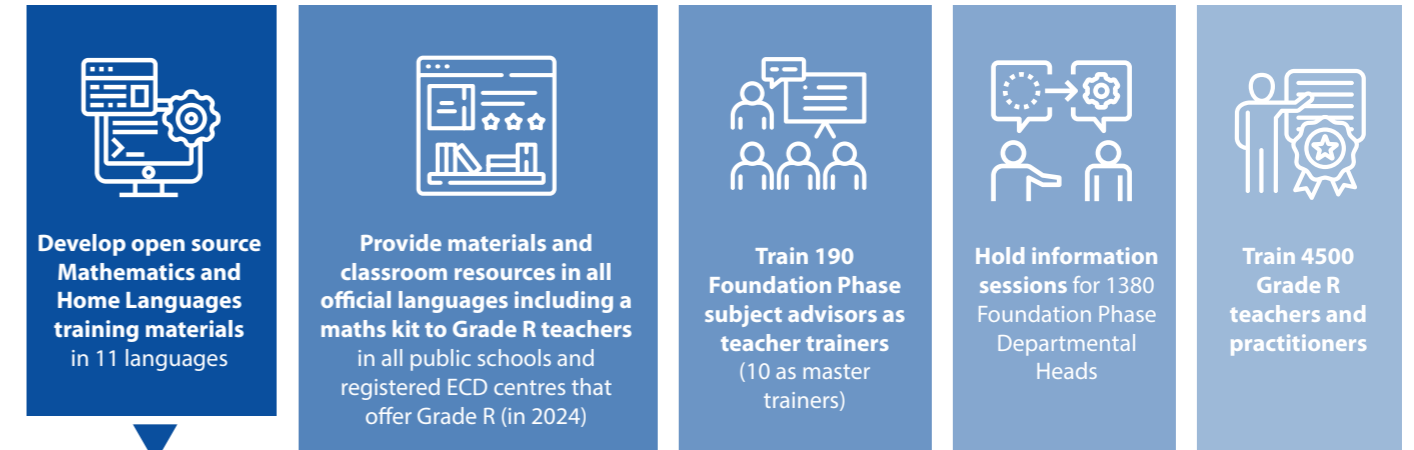
Theory of change



Programme focus

- Targeted learners enrolled in Grade R 130,000 per academic year**
- 4,000 Grade R teachers in public ordinary schools**
- 500 Grade R practitioners in registered ECD Community based centres across 15 districts in Gauteng Province**
- 86 teachers at 35 special needs schools**

Design summary



The **innovation of the programme** is that both Home Languages and Mathematics materials developed by technical partners and quality assured by GDE, are **available as open source in all eleven languages under a Creative Commons licence**. The materials' use can be requested from **JET Education Services (www.jet.org.za)**.

Training dosage model



- **Once-off 5-day in-person block training** at the beginning of training for each component (maths and language)
- **In-person quarterly sessions held for eight hours on a Saturday** covering content for the whole term
- **Online quarterly sessions** convened for **two hours** to optimise system support
- **11 training sessions** held one Saturday per month for **eight hours**, including **one day over school holidays**

Programme timeline



PARTNERS

FUNDERS

PROJECT MANAGEMENT

TECHNICAL PARTNERS

IMPLEMENTING PARTNERS

